

**PRICE INDEX OF MATERIALS
USED IN BUILDING OTHER
THAN HOUSE BUILDING**

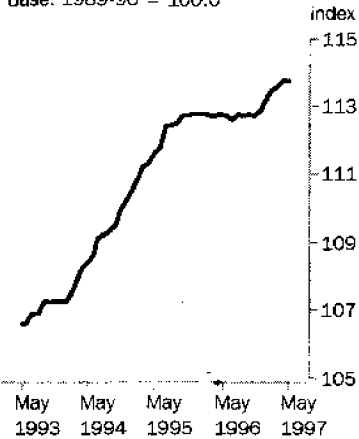
SIX
STATE
CAPITAL
CITIES

EMBARGO: 11:30AM (CANBERRA TIME) MON 7 JUL 1997

MAY KEY FIGURES

All groups

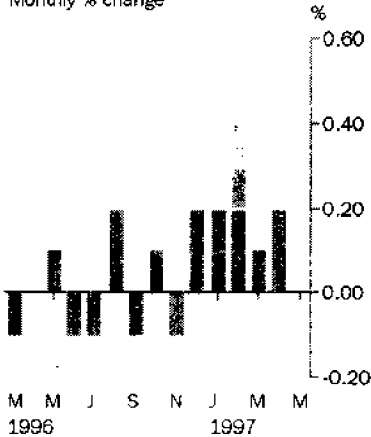
Base: 1989-90 = 100.0



	% change Apr 97 to May 97	% change May 96 to May 97
Weighted average of six State capital cities	0.0	0.9
Sydney	0.0	1.1
Melbourne	-0.1	0.0
Brisbane	0.5	1.8
Adelaide	0.0	1.6
Perth	-0.1	1.4
Hobart	0.0	1.3

All groups

Monthly % change



MAY KEY POINTS

WEIGHTED AVERAGE INDEX

- The only significant movement this month was for an increase in prices for reinforcing steel bar. This was offset by a number of small decreases in other materials.

NOTE:
See 'Planned changes
to this publication'
on Page 2.

CAPITAL CITIES INDEX

- Reinforcing steel bar prices increased in Sydney and Brisbane but remained unchanged in all other cities.

INQUIRIES

- For further information about these and related statistics, contact Robert Adams on 06 252 6198, or any ABS Office.

NOTES

FORTHCOMING ISSUES

ISSUE (Month)

RELEASE DATE

June 1997

5 August 1997

ISSUE (Quarter)

RELEASE DATE

September 1997

20 October 1997

.....

CHANGES IN THIS ISSUE

There are no changes in this issue.

.....

PLANNED CHANGES TO THIS PUBLICATION

As a result of measures in the 1997/98 Federal Budget to reduce ABS running costs, the frequency of compilation and publication of the producer and international trade price indexes will be reduced from monthly to quarterly, thereby putting the statistics on the same frequency as the Consumer Price Index. The June 1997 issue of this publication will be the last monthly release. Commencing with the September quarter 1997, the publication will be released on a quarterly basis.

Subscriptions to this publication will be automatically extended to compensate for the reduced frequency of publication. This will be reflected on 1998 renewal notices. If you wish to make other arrangements please call our toll free number, 1800 020 608.

.....

W. McLennan
Australian Statistician

ALL GROUPS INDEXES, Index Numbers(a)

Period	Weighted average of six State capital cities						
	Sydney	Melbourne	Brisbane	Adelaide	Perth	Hobart	
1993-94	107.5	107.0	106.7	110.1	107.9	107.1	110.1
1994-95	110.4	110.3	108.9	112.9	110.9	110.1	112.2
1995-96	112.7	112.5	111.1	115.0	112.7	113.2	115.1
1996							
March	112.7	112.5	111.1	114.9	113.0	113.4	115.1
April	112.7	112.5	111.3	114.9	113.0	113.5	115.1
May	112.8	112.6	111.2	114.9	112.9	113.6	115.2
June	112.7	112.5	111.3	114.9	112.9	113.5	115.3
July	112.6	112.4	110.8	115.0	112.9	113.9	115.8
August	112.8	112.7	110.8	115.2	113.1	114.0	115.9
September	112.7	112.3	110.8	115.4	113.4	114.2	115.8
October	112.8	112.6	110.6	115.5	113.8	114.3	116.0
November	112.7	112.4	110.2	115.5	114.1	114.1	116.1
December	112.9	112.7	110.5	115.6	114.3	114.4	116.2
1997							
January	113.1	113.0	110.7	115.7	114.5	114.6	116.3
February	113.5	113.2	111.2	116.1	114.6	115.1	116.5
March	113.6	113.3	111.4	116.5	114.3	115.1	116.6
April	113.8	113.8	111.3	116.4	114.7	115.3	116.7
May	113.8	113.8	111.2	117.0	114.7	115.2	116.7

(a) Base of each index: 1989-90 = 100.0



ALL GROUPS INDEXES, Percentage Changes

Period	Weighted average of six State capital cities	Sydney	Melbourne	Brisbane	Adelaide	Perth	Hobart
PERCENTAGE CHANGE (from previous year)							
1993-94	1.4	0.5	2.2	1.1	2.7	1.3	1.8
1994-95	2.7	3.1	2.1	2.5	2.8	2.8	1.9
1995-96	2.1	2.0	2.0	1.9	1.6	2.8	2.6
PERCENTAGE CHANGE (from corresponding month of previous year)							
1996							
March	1.3	1.4	1.4	0.9	0.8	1.8	2.0
April	1.3	1.2	1.5	0.8	1.3	1.7	1.4
May	1.1	0.9	1.3	0.3	0.7	1.8	1.2
June	0.8	0.5	1.5	0.1	0.7	1.3	1.0
July	0.2	-0.1	0.4	-0.1	0.5	1.1	1.0
August	0.4	0.3	0.2	0.1	0.5	1.0	0.9
September	0.2	0.0	0.0	-0.1	0.8	1.4	0.8
October	0.1	0.1	-0.5	0.2	1.1	1.1	0.4
November	0.0	-0.3	-0.9	0.8	1.5	0.9	0.7
December	0.1	-0.1	-0.6	0.5	1.7	1.1	1.0
1997							
January	0.3	0.3	-0.6	0.6	1.7	1.1	0.9
February	0.6	0.6	-0.4	1.0	1.7	1.5	1.1
March	0.8	0.7	0.3	1.4	1.2	1.5	1.3
April	1.0	1.2	0.0	1.3	1.5	1.6	1.4
May	0.9	1.1	0.0	1.8	1.6	1.4	1.3
PERCENTAGE CHANGE (from previous month)							
1996							
March	-0.1	0.0	-0.4	-0.1	0.3	0.0	-0.1
April	0.0	0.0	0.2	0.0	0.0	0.1	0.0
May	0.1	0.1	-0.1	0.0	-0.1	0.1	0.1
June	-0.1	-0.1	0.1	0.0	0.0	-0.1	0.1
July	-0.1	-0.1	-0.4	0.1	0.0	0.4	0.4
August	0.2	0.3	0.0	0.2	0.2	0.1	0.1
September	-0.1	-0.4	0.0	0.2	0.3	0.2	-0.1
October	0.1	0.3	-0.2	0.1	0.4	0.1	0.2
November	-0.1	-0.2	-0.4	0.0	0.3	-0.2	0.1
December	0.2	0.3	0.3	0.1	0.2	0.3	0.1
1997							
January	0.2	0.3	0.2	0.1	0.2	0.2	0.1
February	0.4	0.2	0.5	0.3	0.1	0.4	0.2
March	0.1	0.1	0.2	0.3	-0.3	0.0	0.1
April	0.2	0.4	-0.1	-0.1	0.3	0.2	0.1
May	0.0	0.0	-0.1	0.5	0.0	-0.1	0.0

ALL GROUPS INDEX, Contribution of Major Building Materials(a)

Category	April 1997	May 1997	Change
Weighted average of six State capital cities	113.8	113.8	0.00
GROUPS: Contribution to Weighted Average of six State capital cities index (index points)			
Structural timber	0.82	0.83	0.01
Joinery products	4.57	4.55	-0.02
Clay bricks	1.54	1.55	0.01
Ready mixed concrete	10.16	10.19	0.03
Precast concrete products	4.00	4.00	0.00
Plaster and plaster products	1.60	1.60	0.00
Steel decking and cladding	3.39	3.37	-0.02
Structural steel	9.58	9.58	0.00
Reinforcing steel bar, fabric and mesh	7.70	7.75	0.05
Aluminium windows	6.24	6.25	0.01
Aluminium screens, doors and louvres	1.92	1.92	0.00
Suspended ceilings and access floors	1.10	1.10	0.00
Fabricated steel products	3.77	3.77	0.00
Builders' hardware	1.39	1.39	0.00
Elevators, escalators and travelators	5.77	5.77	0.00
Sand and aggregate	0.12	0.12	0.00
Carpet	2.74	2.73	-0.01
Paint and other coatings	1.16	1.17	0.01
Non-ferrous pipes and fittings	2.04	2.05	0.01
Conductors	2.33	2.33	0.00
Switchboards and switchgear	2.19	2.19	0.00
Lamps and light fittings	2.25	2.25	0.00
Fire protection	3.59	3.60	0.01
Air conditioning equipment excluding piping and electrical materials	9.95	9.95	0.00
Other	23.88	23.79	-0.09

(a) For an explanation of this table see paragraph 19 of the Explanatory Notes

SELECTED ANZSIC GROUPS, Index Numbers(a)

WEIGHTED AVERAGE OF SIX STATE CAPITAL CITIES

Period	Wood and wood products (231-232)	Ceramics (262)	Cement, plaster and concrete products (263)	Iron and steel products (271)	Structural metal products (274)	Sheet metal products (275)	Fabricated metal products (276)	Electrical equipment and appliances (285)	Industrial machinery and equipment (286)	Other materials	All groups
1993-94	112.8	107.6	107.1	112.1	105.1	110.2	116.2	105.5	106.1	108.1	107.5
1994-95	115.0	109.8	111.7	113.3	107.1	113.4	118.0	111.0	107.1	111.8	110.4
1995-96	114.6	111.4	110.5	116.0	109.9	117.3	121.6	117.2	110.4	114.4	112.7
1996											
March	114.4	111.6	109.8	117.5	110.1	117.9	121.6	117.4	111.4	113.6	112.7
April	114.2	110.7	109.8	117.4	109.9	118.2	123.0	116.9	111.7	114.1	112.7
May	114.9	110.5	109.3	117.1	110.0	118.3	123.1	116.9	111.6	114.5	112.8
June	115.1	110.5	109.1	117.2	110.0	117.0	123.0	116.3	111.9	114.8	112.7
July	115.3	110.5	109.7	116.0	110.1	117.2	123.0	114.4	112.0	114.4	112.6
August	115.2	111.4	109.5	116.0	110.6	117.3	122.8	113.9	112.3	114.6	112.8
September	115.0	111.3	109.7	115.9	110.4	117.6	122.7	113.9	111.6	114.5	112.7
October	114.9	111.2	109.8	115.9	110.9	117.7	124.0	114.2	111.5	114.3	112.8
November	114.9	111.7	109.9	116.1	111.0	118.4	123.8	113.2	110.4	114.0	112.7
December	115.0	111.8	110.2	116.2	111.1	119.2	124.3	113.6	110.4	114.4	112.9
1997											
January	115.2	112.8	110.5	116.3	111.3	119.2	124.8	114.5	110.4	114.5	113.1
February	115.5	112.8	110.8	119.7	111.4	119.4	125.0	114.8	110.6	114.7	113.5
March	115.7	112.9	110.8	120.0	111.3	120.2	125.0	115.1	109.9	115.6	113.6
April	116.2	112.9	111.3	120.5	111.6	120.3	125.4	115.2	109.9	115.5	113.8
May	116.1	113.1	111.6	119.8	111.8	120.4	125.7	115.1	109.9	115.2	113.8

(a) Base of each index: 1989-90 = 100.0

SELECTED BUILDING MATERIALS, Index Numbers(a)

WEIGHTED AVERAGE OF SIX STATE CAPITAL CITIES.....

Period	Structural timber	Hardwood	Softwood	Plywood and board	Joinery products	Ceramic sanitary- ware	Ceramic tiles	Clay bricks	Cement	Ready mixed concrete
1993-94	127.1	114.0	137.4	113.9	108.9	115.7	102.9	107.8	108.5	106.7
1994-95	128.3	122.7	137.3	117.5	110.9	120.2	102.3	111.0	109.8	112.4
1995-96	120.5	121.7	127.8	111.0	113.4	127.5	102.5	110.0	113.9	108.2
1996										
March	118.6	119.9	125.7	110.5	113.5	128.8	103.1	109.2	116.1	106.5
April	117.6	119.5	124.6	110.0	113.7	128.7	101.8	108.1	116.0	106.5
May	116.7	119.2	123.5	109.8	114.8	128.7	102.0	107.4	116.0	105.9
June	116.6	118.9	123.4	109.6	115.2	128.7	101.8	107.4	116.0	105.4
July	116.8	118.4	123.8	108.9	115.6	128.7	101.8	107.5	116.0	106.0
August	116.3	117.6	123.3	108.7	115.6	132.6	101.3	107.7	116.0	105.7
September	115.1	116.9	121.9	108.8	115.6	133.1	100.5	107.7	116.0	105.7
October	114.9	116.2	121.8	107.5	115.7	133.4	100.2	107.7	116.0	105.8
November	114.9	116.3	121.8	106.8	115.9	133.8	100.2	108.6	116.0	105.9
December	115.2	118.0	121.9	107.4	115.9	134.8	100.2	108.1	116.0	106.4
1997										
January	115.8	119.5	122.3	107.2	116.1	138.2	100.4	108.1	116.0	106.8
February	116.8	119.9	123.5	107.9	116.1	138.1	99.8	108.7	116.0	107.4
March	117.0	120.2	123.7	108.3	116.3	139.5	98.9	108.9	116.8	107.0
April	117.6	120.4	124.4	109.0	116.8	139.5	97.8	109.7	117.1	107.3
May	118.1	120.1	125.1	108.9	116.5	139.5	98.1	110.1	117.2	107.6

(a) Base of each index: 1989-90 = 100.0

SELECTED BUILDING MATERIALS, Index Numbers(a) *continued*

WEIGHTED AVERAGE OF SIX STATE CAPITAL CITIES.....

<i>Period</i>	<i>Precast concrete products</i>	<i>Concrete masonry blocks</i>	<i>Plaster and plaster products</i>	<i>Fibrous cement products</i>	<i>Steel decking and cladding</i>	<i>Cast iron pipes and products</i>	<i>Structural steel</i>	<i>Reinforcing steel bar, fabric and mesh</i>	<i>Aluminium windows</i>	<i>Aluminium screens, doors, louvres</i>
1993-94	108.1	106.5	112.3	112.8	107.5	128.3	104.3	112.7	99.7	101.5
1994-95	112.3	106.5	113.6	117.7	108.9	132.1	105.3	111.5	105.4	109.2
1995-96	115.0	112.8	114.9	120.5	110.9	132.4	109.3	112.0	108.4	114.9
1996										
March	115.3	115.7	114.4	120.6	112.8	133.1	110.2	111.7	108.2	114.9
April	115.2	114.5	115.7	120.6	112.6	133.1	110.3	110.8	108.2	114.9
May	115.3	113.5	115.3	120.2	112.2	133.0	110.6	110.4	108.2	115.0
June	115.5	113.9	115.9	120.1	112.2	132.6	110.6	110.2	108.0	114.9
July	115.6	114.5	116.0	122.0	111.3	132.6	110.9	110.2	107.9	114.9
August	115.9	113.7	115.4	122.6	111.3	132.2	111.4	111.6	108.0	114.9
September	117.0	113.6	115.6	122.7	111.0	132.2	111.4	110.8	108.1	114.9
October	117.2	113.5	115.6	122.6	110.8	132.4	112.2	111.0	108.7	115.2
November	117.1	113.4	115.7	122.6	110.8	132.4	112.8	111.2	108.5	114.7
December	117.4	113.5	115.7	122.8	111.0	132.7	113.1	111.2	108.5	115.2
1997										
January	117.5	113.4	115.7	122.7	111.0	132.7	113.2	111.5	108.5	115.2
February	117.7	113.6	115.7	122.7	115.5	132.7	113.2	111.4	108.5	115.2
March	118.4	113.8	115.8	122.7	115.8	133.2	112.9	111.4	108.5	116.5
April	118.6	114.2	117.9	122.8	116.0	133.5	112.8	112.4	108.7	116.9
May	118.7	115.7	117.9	123.1	115.3	133.5	112.8	113.1	108.8	117.2

(a) Base of each index: 1989-90 = 100.0

SELECTED BUILDING MATERIALS, Index Numbers(a) *continued*

WEIGHTED AVERAGE OF SIX STATE CAPITAL CITIES.....

Period	Suspended ceilings and access floors	Fabricated steel products	Sheet steel sanitary-ware	Builders' hardware	Sand and aggregate	Carpet	Paint and other coatings	Glass products	Non-ferrous pipes and fittings	Plastic floor coverings
1993-94	100.0	107.3	114.3	115.3	118.7	99.2	119.9	102.5	102.4	110.0
1994-95	102.2	108.9	116.4	116.6	121.6	99.4	123.3	105.7	118.1	114.7
1995-96	105.3	111.9	121.6	119.5	119.1	102.6	129.1	110.3	129.4	119.9
1996										
March	106.1	112.1	121.7	118.9	118.8	103.5	130.0	109.9	128.3	121.4
April	106.2	112.3	121.8	121.7	118.5	103.5	129.7	111.6	128.3	120.4
May	106.2	113.7	121.9	120.5	118.4	103.6	129.9	111.8	131.7	120.4
June	106.2	113.7	121.9	119.4	118.4	103.6	134.4	111.8	131.6	115.9
July	106.2	114.1	122.3	119.7	118.4	102.8	135.3	111.8	129.0	115.6
August	106.1	114.1	122.1	119.1	118.5	102.8	136.4	112.1	128.5	115.6
September	106.0	114.1	122.1	118.9	118.2	103.4	135.8	112.9	128.5	115.6
October	106.0	114.1	122.1	118.5	118.5	103.4	136.4	113.1	125.6	115.6
November	106.0	114.0	122.3	117.4	118.5	103.0	136.2	113.1	124.2	114.0
December	106.2	113.9	122.2	117.3	119.1	102.8	136.3	113.1	127.1	114.0
1997										
January	106.3	114.6	121.7	117.7	119.5	102.8	136.2	113.1	127.3	113.5
February	106.3	115.3	121.7	118.3	120.0	103.0	135.0	113.1	130.5	113.5
March	104.9	115.1	121.9	118.0	120.7	104.0	135.2	113.1	130.5	113.5
April	104.9	115.1	122.2	118.0	121.2	104.0	134.4	113.1	130.5	113.5
May	104.9	115.1	122.2	118.3	120.8	103.8	135.0	113.1	130.8	113.5

(a) Base of each index: 1989-90 = 100.0

SELECTED MAJOR BUILDING MATERIALS, Index Numbers(a)-Sydney and Melbourne

Period	Structural timber	Clay bricks	Ready mixed concrete	Pre-cast concrete products	Steel decking and cladding	Structural steel	Re-inforcing steel bar, fabric and mesh	Aluminium windows	Fabricated steel products	Builders' hardware	Sand and aggregate	Carpet	Paint and other coatings	Non-ferrous pipes and fittings
SYDNEY														
1993-94	132.2	99.7	90.4	105.6	110.8	110.0	121.3	98.3	104.6	115.0	113.3	98.8	122.5	109.0
1994-95	132.0	103.7	100.8	109.5	111.6	107.8	119.3	106.2	105.7	118.1	116.4	99.4	123.8	124.8
1995-96	121.5	102.8	99.2	112.3	112.3	110.0	120.6	109.3	109.7	123.2	113.8	103.5	124.9	136.2
1996														
March	119.7	102.1	97.7	112.7	113.6	110.5	120.3	108.9	110.0	122.4	113.2	105.0	126.6	135.5
April	117.9	99.6	97.7	112.4	113.3	110.5	120.3	108.9	110.0	128.9	112.4	105.0	126.3	135.5
May	117.2	97.3	97.3	112.1	113.3	110.6	119.8	108.9	112.5	126.3	112.1	105.0	126.3	139.7
June	116.8	97.3	97.3	112.5	113.3	110.6	119.6	108.9	112.6	123.7	112.1	105.0	130.8	139.3
July	118.0	97.3	97.5	112.5	113.7	111.2	119.2	108.9	113.7	122.3	112.1	104.0	132.1	137.3
August	118.6	97.7	97.5	112.6	113.6	112.3	120.9	108.9	113.3	120.5	112.1	104.0	132.6	136.9
September	117.5	97.2	97.8	114.8	113.0	111.9	118.1	109.0	113.3	120.0	112.1	104.4	132.6	136.9
October	117.2	97.2	98.0	115.1	113.0	113.2	118.2	110.8	113.3	119.1	112.8	104.4	132.6	132.7
November	117.1	97.2	97.6	115.1	113.0	113.2	118.6	110.1	112.9	116.6	112.8	104.4	132.6	131.9
December	117.0	97.1	97.6	115.1	113.0	113.1	118.6	110.1	112.8	116.4	112.8	103.9	132.6	136.6
1997														
January	117.0	97.1	98.0	115.1	113.0	113.4	119.6	110.1	112.8	116.7	113.1	103.9	132.6	136.4
February	117.8	98.2	98.2	115.2	116.5	113.5	119.6	110.1	112.8	117.2	113.1	103.9	129.5	140.0
March	118.0	98.2	98.2	115.4	117.2	112.6	119.7	110.1	111.6	116.7	115.1	104.8	130.0	140.0
April	119.1	100.3	98.3	115.7	117.4	112.6	122.2	109.9	111.5	116.7	115.1	104.8	132.4	140.1
May	119.4	100.3	98.1	116.1	117.7	112.1	123.6	109.9	111.3	117.6	115.1	104.4	131.4	140.1
MELBOURNE														
1993-94	119.5	109.3	123.4	99.2	104.7	93.3	102.0	96.5	109.4	116.2	119.5	98.3	125.0	86.5
1994-95	123.0	112.3	124.2	104.8	106.5	95.3	101.8	98.8	110.7	113.7	118.5	98.5	131.2	100.8
1995-96	116.1	112.1	118.6	108.1	109.9	100.9	102.7	100.8	113.1	114.5	114.6	101.6	141.2	112.2
1996														
March	112.8	111.3	115.5	107.8	112.6	102.3	102.5	100.8	113.0	114.1	114.6	102.4	141.1	112.0
April	112.4	111.3	115.3	107.9	112.6	102.3	100.2	100.8	113.4	114.1	114.6	102.4	140.8	112.0
May	111.8	111.3	114.2	108.7	111.2	103.1	100.2	100.8	114.8	114.1	114.6	102.4	141.1	114.8
June	112.0	111.3	113.5	108.7	111.2	103.1	100.2	100.8	114.8	114.0	114.6	102.4	145.5	114.8
July	111.4	111.3	113.4	108.8	107.4	103.1	100.2	100.6	114.8	115.6	114.6	101.0	147.6	112.3
August	109.8	111.3	112.3	109.1	107.4	103.1	100.6	100.6	114.8	115.6	115.2	101.0	147.6	112.3
September	107.0	111.3	111.1	109.0	107.4	103.3	100.8	100.6	114.8	115.6	113.8	101.0	146.8	112.3
October	106.8	111.2	109.9	109.0	106.7	104.1	100.8	100.6	114.8	115.6	113.8	101.0	146.8	111.6
November	106.8	113.7	109.4	109.3	106.7	104.1	100.8	100.6	114.8	115.6	114.1	101.0	146.8	108.8
December	108.1	113.7	110.7	110.2	107.4	104.3	100.8	100.6	114.8	115.6	116.2	101.0	146.8	108.8
1997														
January	110.1	113.7	111.5	110.3	107.4	104.4	100.8	100.6	116.2	116.0	116.8	101.0	146.8	109.6
February	111.6	113.7	112.2	110.3	113.2	104.5	100.8	100.6	118.2	117.5	118.4	101.0	146.8	112.4
March	111.7	113.7	111.0	111.9	113.2	104.5	100.8	100.6	119.2	117.4	117.5	102.8	147.1	112.4
April	111.9	113.7	111.9	111.8	113.2	105.0	100.6	100.5	119.2	117.4	117.5	102.8	140.4	112.1
May	113.1	114.1	111.9	111.8	110.3	105.1	100.6	100.6	119.4	117.4	116.4	102.9	143.3	112.8

(a) Base of each index: 1989-90 = 100.0

SELECTED MAJOR BUILDING MATERIALS, Index Numbers(a)-Brisbane and Adelaide

Period	Structural timber	Clay bricks	Ready mixed concrete	Pre-cast concrete products	Steel decking and cladding	Structural steel	Re-inforcing steel bar, fabric and mesh	Aluminium windows	Fabricated steel products	Builders' hardware	Sand and aggregate	Carpet	Paint and other coatings	Non-ferrous pipes and fittings
BRISBANE														
1993-94	123.8	113.2	114.8	112.8	105.6	118.7	119.3	100.4	114.7	110.0	141.0	95.5	112.6	126.4
1994-95	124.0	112.7	114.7	113.8	105.1	126.8	119.1	102.7	117.4	111.3	155.0	92.6	115.1	141.0
1995-96	115.7	102.0	105.3	111.3	107.4	135.6	114.6	104.8	117.2	109.0	156.6	93.2	122.7	155.0
1996														
March	114.0	99.4	104.1	111.2	109.7	137.3	113.5	104.2	117.7	107.1	156.6	93.6	123.9	149.9
April	114.0	99.4	103.9	111.2	109.2	138.2	112.2	104.2	117.7	107.1	156.6	93.6	123.9	149.9
May	109.7	99.4	103.0	111.2	109.2	137.7	111.6	103.4	117.6	107.1	156.6	93.6	123.9	153.3
June	109.7	99.4	101.6	111.2	109.2	138.0	110.8	103.4	117.6	107.1	156.6	93.6	123.9	153.5
July	109.2	100.7	102.2	111.0	109.2	138.0	112.5	102.3	116.6	103.7	156.6	94.0	125.2	153.5
August	109.2	100.7	102.4	110.5	109.6	136.8	114.6	103.3	117.8	103.7	156.6	94.0	128.6	153.5
September	109.3	102.5	102.3	112.4	109.6	136.8	114.6	103.9	118.2	103.7	156.6	95.0	128.6	153.5
October	109.3	102.7	102.7	112.9	109.6	137.2	114.6	103.8	117.3	104.0	156.6	95.0	128.6	150.7
November	109.3	104.9	103.2	113.1	109.6	137.2	114.6	103.8	117.8	104.0	156.6	95.0	128.0	149.4
December	108.9	104.9	103.4	113.1	109.6	137.2	114.6	103.8	117.8	104.0	156.6	95.0	128.0	152.6
1997														
January	108.9	104.9	103.4	113.1	109.6	136.1	114.6	103.8	121.3	104.4	156.6	95.0	128.0	152.6
February	110.2	105.8	104.6	112.0	113.7	136.1	114.6	103.8	122.0	104.2	156.6	95.0	128.0	156.1
March	110.2	105.8	104.7	113.2	113.7	136.1	114.6	103.8	122.9	104.3	156.6	95.0	128.0	156.1
April	110.9	105.8	105.4	112.9	113.7	134.4	114.6	103.8	122.7	104.3	156.6	95.0	128.0	156.4
May	110.9	105.8	108.3	113.1	113.7	136.1	116.7	103.8	122.9	104.5	156.6	95.0	129.9	157.7
ADELAIDE														
1993-94	152.7	115.6	101.5	115.6	105.5	102.4	106.9	104.0	103.7	115.5	113.3	99.8	104.0	103.7
1994-95	153.3	119.0	112.1	118.1	108.3	106.6	106.5	110.9	107.1	118.6	114.5	101.6	109.6	117.3
1995-96	148.4	120.1	104.3	120.2	114.1	108.9	108.7	115.6	112.0	120.2	114.8	106.1	115.7	126.2
1996														
March	147.9	119.9	104.6	120.4	116.7	109.7	109.1	115.9	111.9	120.1	115.4	106.1	116.1	123.1
April	147.9	119.9	104.6	120.4	116.7	109.7	109.1	115.9	112.3	120.1	115.4	106.1	116.1	123.1
May	147.3	120.1	103.9	120.5	116.7	109.7	109.1	115.9	112.3	120.6	115.4	106.8	116.1	124.6
June	147.3	119.6	101.9	120.5	116.7	109.7	109.1	115.9	112.3	120.8	115.4	106.8	124.3	126.0
July	147.3	119.6	101.9	120.5	116.7	109.7	109.1	116.5	112.3	121.9	115.4	107.1	120.4	122.7
August	147.3	119.6	101.9	120.5	116.7	109.7	111.4	116.5	112.3	122.5	115.4	107.1	126.7	122.7
September	147.8	119.6	105.3	120.3	116.7	109.7	112.5	116.5	112.3	122.5	115.4	110.6	121.9	122.3
October	148.3	119.6	108.7	120.3	116.7	109.7	113.7	116.5	112.3	122.5	115.2	110.6	128.5	120.7
November	148.3	119.6	112.5	118.3	116.7	114.6	113.7	116.5	112.3	122.5	115.2	110.6	128.5	119.5
December	148.7	115.1	113.8	119.3	116.7	114.6	113.7	116.5	112.3	122.5	115.2	110.6	127.7	120.8
1997														
January	148.7	115.1	113.8	119.4	116.7	114.6	113.7	116.5	112.3	122.5	116.0	110.6	127.7	121.4
February	148.7	115.1	113.1	119.5	119.7	114.6	113.7	116.5	112.3	122.5	116.0	113.0	127.7	123.9
March	149.2	116.5	112.5	119.7	119.7	114.6	113.7	116.5	112.3	122.5	117.2	113.5	127.7	123.9
April	149.6	116.5	113.1	121.5	120.5	114.6	113.7	117.6	112.3	122.5	119.7	113.5	127.7	123.9
May	149.6	116.5	114.9	120.9	120.5	114.6	113.7	117.6	112.3	122.5	119.7	113.5	125.6	123.9

(a) Base of each index: 1989-90 = 100.0

SELECTED MAJOR BUILDING MATERIALS, Index Numbers(a)-Perth and Hobart

Period	Structural timber	Clay bricks	Ready mixed concrete	Pre-cast concrete products	Steel decking and cladding	Structural steel	Reinforcing steel bar, fabric and mesh	Aluminium windows	Fabricated steel products	Builders' hardware	Sand and aggregate	Carpet	Paint and other coatings	Non-ferrous pipes and fittings
PERTH														
1993-94	110.6	113.9	116.6	122.5	106.3	100.4	112.3	104.4	107.1	119.6	116.4	105.0	120.6	95.1
1994-95	110.6	118.0	117.8	127.8	108.6	103.6	110.7	112.4	108.5	122.9	119.9	105.2	124.0	115.2
1995-96	109.3	120.7	115.0	133.0	108.6	107.5	109.4	118.1	110.3	127.5	115.8	105.9	136.4	127.5
1996														
March	109.1	120.2	114.1	135.4	109.8	108.2	109.2	118.2	110.7	128.1	115.3	105.9	137.2	127.2
April	108.6	120.2	114.7	135.4	109.8	108.2	107.7	118.2	110.7	128.1	115.3	105.9	137.2	127.2
May	108.6	123.4	114.7	135.4	109.8	108.8	105.9	118.2	110.7	128.1	115.3	105.9	137.2	130.5
June	108.6	123.4	114.7	135.8	109.8	108.8	105.9	116.4	110.7	128.2	115.3	105.9	143.2	130.5
July	108.6	123.4	119.8	135.8	109.8	108.8	105.9	116.4	110.7	135.0	115.4	105.9	143.2	123.2
August	105.9	123.4	119.5	138.7	109.8	109.7	106.8	116.4	111.2	135.0	115.5	105.9	143.8	120.3
September	105.9	123.6	119.4	138.7	109.8	111.2	109.9	116.4	111.2	135.0	115.5	105.9	143.8	120.3
October	105.7	123.6	119.4	138.7	109.8	111.2	110.2	116.4	111.2	135.0	115.7	105.9	143.8	116.3
November	105.6	123.6	119.6	138.7	109.8	113.4	110.2	116.4	111.2	135.0	115.7	102.3	143.1	115.9
December	105.6	123.6	119.6	138.7	109.8	115.7	110.2	116.4	111.2	135.0	115.7	102.3	143.8	120.2
1997														
January	105.6	123.6	119.6	138.7	109.8	116.0	108.7	116.4	111.2	135.5	115.7	102.3	143.8	120.2
February	107.4	123.6	121.8	141.6	116.6	116.1	107.8	116.4	111.2	135.6	115.7	102.3	143.8	123.4
March	107.6	123.6	121.7	141.6	116.9	116.1	107.8	116.4	111.5	135.6	115.7	102.3	143.8	123.4
April	107.5	123.6	120.9	141.6	116.9	116.1	107.8	118.8	111.7	135.7	118.2	102.3	143.8	123.4
May	107.5	126.6	120.4	141.6	116.9	116.1	107.0	118.8	112.0	134.8	117.6	102.3	147.5	123.4
HOBART														
1993-94	115.9	114.2	117.5	112.9	106.4	116.0	109.1	100.5	106.6	115.7	129.6	102.1	114.1	133.1
1994-95	124.5	116.8	117.8	122.2	107.6	116.4	106.7	101.2	106.7	112.8	133.0	102.6	116.0	172.6
1995-96	119.0	122.6	115.3	129.5	111.5	121.4	108.9	104.5	109.0	118.2	133.1	105.0	120.1	172.9
1996														
March	116.9	123.7	113.2	128.4	112.3	121.9	109.2	104.7	108.3	117.7	133.1	105.4	121.5	169.4
April	116.9	123.7	113.2	128.4	112.3	122.7	109.2	104.4	111.5	117.3	133.1	105.9	118.1	172.8
May	114.4	123.7	112.9	128.4	112.3	122.7	109.2	104.4	111.5	116.0	133.1	105.9	120.6	174.5
June	113.8	124.5	112.1	128.4	112.3	123.7	109.2	104.4	111.9	116.1	133.1	105.9	124.5	174.5
July	114.5	124.5	114.2	132.6	112.3	125.2	109.2	104.4	111.9	115.4	133.1	105.9	126.1	168.7
August	112.7	124.5	115.5	132.6	112.3	126.0	110.7	104.4	112.4	118.9	133.1	105.9	126.1	167.9
September	112.7	124.5	114.7	132.6	112.3	124.7	110.8	104.4	113.6	119.0	133.1	105.9	126.7	167.9
October	110.6	124.5	115.8	132.6	112.3	124.7	110.9	105.5	113.6	119.1	133.1	105.9	126.7	160.8
November	110.3	125.6	115.8	132.6	112.2	126.5	110.9	105.5	113.4	119.1	133.1	105.9	127.0	160.9
December	108.9	125.6	116.3	132.6	112.2	126.7	110.9	105.5	113.4	118.2	133.1	105.9	128.2	162.4
1997														
January	108.9	125.7	116.3	132.6	112.2	126.7	110.9	106.8	113.4	118.2	135.0	105.9	127.8	162.4
February	108.9	125.7	116.6	132.6	118.6	126.7	111.0	106.8	113.4	118.0	134.2	105.9	127.3	163.1
March	109.8	125.7	117.3	131.3	118.6	126.7	110.9	106.8	113.5	115.1	134.2	105.9	127.2	166.9
April	108.9	125.7	117.3	131.2	118.6	126.7	110.9	106.8	113.5	115.1	134.2	105.9	127.2	166.9
May	108.9	125.7	117.5	131.2	118.9	126.7	110.9	106.8	113.5	115.2	134.2	105.9	124.6	166.9

(a) Base of each index: 1989-90 = 100.0

SPECIAL SERIES, Index Numbers(a)-Weighted Average of Six State Capital Cities

ELECTRICAL MATERIALS.....

Period	All groups excluding electrical materials and mechanical services	WEIGHTED AVERAGE OF SIX STATE CAPITAL CITIES					All electrical materials	All electrical materials excluding lamps and light fittings
		Conductors	Conduit and accessories	Switchboards and switchgear	Lamps and light fittings	All electrical materials		
1993-94	107.8	99.2	114.2	114.1	102.7	105.5	106.7	
1994-95	110.6	114.2	126.1	116.5	104.2	112.2	116.1	
1995-96	112.0	127.5	135.0	120.8	106.9	119.2	125.1	
1996								
March	111.9	126.5	135.0	121.3	107.8	119.3	124.9	
April	111.9	125.3	132.9	121.7	106.9	118.6	124.2	
May	112.0	123.6	133.0	122.2	107.4	118.4	123.7	
June	112.0	122.2	133.1	122.4	106.9	117.9	123.1	
July	112.1	115.3	134.4	122.7	106.9	115.9	120.1	
August	112.3	114.2	135.5	122.8	106.0	115.3	119.8	
September	112.2	114.1	136.5	122.7	106.1	115.4	119.8	
October	112.4	114.1	136.6	122.8	106.3	115.5	119.8	
November	112.4	110.8	136.3	122.8	106.3	114.4	118.2	
December	112.5	111.1	136.6	122.9	106.5	114.6	118.4	
1997								
January	112.8	113.4	136.6	123.9	106.5	115.6	119.9	
February	113.1	114.2	134.5	124.2	106.5	115.8	120.2	
March	113.3	115.0	137.0	124.2	106.6	116.3	120.9	
April	113.6	114.9	132.2	124.3	106.9	116.0	120.3	
May	113.7	114.9	132.5	124.7	106.6	116.0	120.5	

(a) Base of each index: 1989-90 = 100.0

MECHANICAL SERVICES COMPONENTS.....

PLUMBING MATERIALS.....

Period	MECHANICAL SERVICES COMPONENTS.....				PLUMBING MATERIALS.....			
	Air conditioning	Fire protection	Elevators, escalators and travelators	All mechanical services	Hydraulic plumbing	Drainage	Roof plumbing	All plumbing materials
WEIGHTED AVERAGE OF SIX STATE CAPITAL CITIES								
1993-94	111.0	110.6	90.9	107.5	110.9	115.7	107.4	110.5
1994-95	113.9	112.1	92.2	109.7	117.5	122.7	109.0	116.8
1995-96	117.1	115.8	97.3	113.7	124.5	124.3	108.6	123.2
1996								
March	117.4	116.0	99.0	114.4	124.4	122.1	110.2	122.9
April	117.7	116.7	99.0	114.7	124.3	120.6	110.0	122.7
May	117.8	117.4	99.0	114.9	125.9	125.1	109.8	124.5
June	117.4	117.8	99.4	114.9	126.1	126.3	109.8	124.8
July	117.1	117.8	99.5	114.7	124.9	125.9	109.5	123.6
August	117.1	117.6	100.2	114.9	125.6	126.7	109.5	124.3
September	117.0	117.6	99.1	114.5	125.3	122.1	109.4	123.7
October	116.8	120.0	99.0	114.8	124.5	121.5	109.4	123.0
November	116.6	120.2	97.2	114.1	124.3	121.3	109.4	122.8
December	117.0	121.4	97.2	114.5	125.4	121.3	109.4	123.7
1997								
January	117.2	121.8	97.2	114.7	126.2	120.8	109.7	124.4
February	117.4	121.8	97.5	114.9	127.3	121.3	113.2	125.5
March	117.6	121.8	96.1	114.6	127.7	121.9	114.0	125.9
April	117.6	122.4	96.1	114.7	128.2	126.5	114.0	126.8
May	117.6	122.8	96.1	114.7	128.2	126.6	114.5	126.8

(a) Base of each index: 1989-90 = 100.0

ELECTRICAL MATERIALS.....

Period	All groups excluding electrical materials and mechanical services	Conductors	Conduit and accessories	Switchboards and switchgear	Lamps and light fittings	All electrical materials	All electrical materials excluding lamps and light fittings
SYDNEY							
1993-94	106.7	105.5	112.3	116.1	100.6	107.2	110.0
1994-95	109.8	125.2	128.6	119.5	104.6	116.7	122.4
1995-96	111.4	139.7	142.6	124.8	108.5	125.1	132.9
1996							
March	111.3	138.0	144.5	124.9	110.3	125.3	132.4
April	111.4	134.9	140.1	125.1	108.2	123.4	130.6
May	111.4	135.0	140.3	126.1	108.9	124.0	131.0
June	111.4	132.4	140.3	126.6	108.0	123.0	130.0
July	111.4	127.0	142.5	126.6	108.0	121.4	127.7
August	111.7	126.9	145.8	127.0	107.9	121.8	128.2
September	111.3	126.6	147.9	126.6	107.9	121.7	128.1
October	111.5	126.6	147.9	126.9	107.9	121.8	128.2
November	111.4	125.3	147.9	126.9	107.9	121.4	127.6
December	111.5	125.3	147.9	127.1	108.0	121.4	127.7
1997							
January	111.9	128.3	147.9	128.4	108.0	122.8	129.7
February	112.0	129.0	146.1	128.6	108.0	122.9	129.9
March	112.1	130.1	149.2	128.6	108.0	123.4	130.7
April	112.7	131.7	146.4	128.7	108.4	123.9	131.2
May	112.8	131.7	146.5	129.4	108.0	124.0	131.5
MELBOURNE							
1993-94	106.6	109.1	120.8	109.8	100.3	107.3	110.8
1994-95	108.5	126.0	129.8	112.2	99.2	113.5	120.8
1995-96	109.7	139.6	129.0	116.0	100.9	119.4	128.7
1996							
March	109.4	139.8	126.0	117.1	101.4	119.7	128.9
April	109.5	139.6	124.6	117.1	101.4	119.6	128.7
May	109.7	133.6	124.2	117.1	101.3	117.6	125.8
June	109.7	133.3	124.2	117.1	101.3	117.5	125.6
July	109.5	120.9	124.2	117.2	101.3	113.6	119.8
August	109.5	118.7	122.9	117.2	101.1	112.7	118.6
September	109.5	118.6	123.1	117.2	101.1	112.7	118.6
October	109.3	118.6	123.1	117.1	101.1	112.7	118.6
November	109.2	113.8	123.1	117.2	101.0	111.2	116.3
December	109.6	114.6	124.1	117.1	101.5	111.6	116.8
1997							
January	109.7	115.6	124.1	118.3	101.5	112.3	117.8
February	110.3	116.5	121.3	118.7	101.5	112.5	118.0
March	110.7	117.1	121.6	118.7	101.5	112.7	118.4
April	110.7	113.6	113.7	118.8	101.5	111.0	115.8
May	110.7	113.6	114.3	119.0	101.5	111.1	116.0

(a) Base of each index: 1989-90 = 100.0

MECHANICAL SERVICES COMPONENTS.....

PLUMBING MATERIALS.....

Period	Air conditioning	Fire protection	Elevators, escalators and travelators	All mechanical services	Hydraulic plumbing	Drainage	Roof plumbing	All plumbing materials
SYDNEY								
1993-94	112.0	112.0	90.0	108.3	120.9	116.2	109.4	116.6
1994-95	115.0	113.3	92.2	110.8	127.2	121.1	110.6	122.3
1995-96	117.8	114.9	96.1	113.8	135.1	125.2	103.3	129.1
1996								
March	117.9	114.9	97.0	114.2	135.2	123.2	102.5	129.0
April	118.0	114.9	97.0	114.3	135.2	121.6	102.2	128.9
May	118.4	116.6	97.0	114.7	137.3	127.4	101.7	131.1
June	117.5	117.4	97.6	114.6	137.4	130.0	101.7	131.4
July	117.2	117.4	97.6	114.4	136.8	130.0	100.7	130.8
August	117.2	117.4	97.9	114.5	137.8	132.0	100.7	131.9
September	116.6	117.4	96.8	113.8	136.8	122.0	100.5	130.2
October	116.4	122.9	96.8	114.6	135.6	120.7	100.5	129.1
November	116.7	123.2	95.2	114.3	135.3	120.7	100.5	128.8
December	117.5	125.5	95.2	115.1	137.3	120.7	100.6	130.6
1997								
January	117.7	125.6	95.2	115.2	139.7	120.4	101.2	132.6
February	117.9	125.6	95.6	115.5	140.9	121.8	102.9	133.8
March	118.5	125.6	94.5	115.4	141.5	122.5	104.1	134.4
April	118.6	125.6	94.5	115.5	142.5	128.6	104.1	135.7
May	118.6	126.3	94.5	115.6	142.2	128.6	104.1	135.5

MELBOURNE

1993-94	110.9	108.0	89.8	106.8	102.8	114.6	105.1	105.3
1994-95	114.0	107.5	90.9	108.9	110.1	124.4	108.4	112.6
1995-96	118.0	111.3	98.5	114.1	116.7	125.7	114.7	118.9
1996								
March	118.4	111.5	101.5	115.3	117.0	124.9	118.6	119.2
April	119.2	111.5	101.5	115.8	116.8	125.1	118.6	119.1
May	118.7	111.5	101.5	115.5	118.2	129.1	118.6	120.7
June	118.7	111.5	101.8	115.6	118.5	129.6	118.6	120.9
July	118.1	111.5	102.2	115.4	116.8	128.2	118.6	119.3
August	118.0	111.5	103.5	115.8	117.7	127.7	118.7	120.2
September	118.2	111.5	102.9	115.7	117.7	127.3	118.7	120.1
October	118.2	111.5	102.6	115.6	117.7	127.5	118.7	120.1
November	117.8	111.5	99.8	114.5	117.2	126.7	118.7	119.6
December	117.8	112.0	99.8	114.5	117.2	126.6	118.7	119.6
1997								
January	117.9	112.0	99.8	114.6	116.6	124.9	118.7	118.9
February	118.0	112.0	100.4	114.9	117.6	125.0	126.6	120.1
March	118.2	112.0	98.5	114.3	117.6	125.2	126.7	120.1
April	117.9	114.4	98.3	114.5	117.9	128.9	126.7	120.7
May	118.0	114.4	98.2	114.5	118.1	129.2	126.7	120.8

(a) Base of each index: 1989-90 = 100.0

ELECTRICAL MATERIALS.....

Period	<i>All groups excluding electrical materials and mechanical services</i>	Conductors	Conduit and accessories	Switchboards and switchgear	Lamps and light fittings	All electrical materials	<i>All electrical materials excluding lamps and light fittings</i>
BRISBANE							
1993-94	112.5	75.9	102.0	115.3	108.7	98.4	94.2
1994-95	115.4	91.1	109.9	117.6	104.9	103.1	103.1
1995-96	116.6	106.6	120.1	123.3	106.3	110.7	113.8
1996							
March	116.4	105.5	118.9	124.3	106.1	110.5	113.6
April	116.3	105.7	120.0	124.3	106.1	110.6	113.8
May	116.3	105.7	121.1	125.2	106.1	110.9	114.3
June	116.2	103.3	121.6	125.3	106.1	110.3	113.3
July	116.3	98.7	125.3	126.1	106.1	109.3	111.9
August	116.6	98.7	125.5	125.3	106.5	109.2	111.5
September	116.9	98.6	125.5	125.6	106.1	109.2	111.7
October	117.0	98.6	127.6	125.6	106.1	109.3	111.9
November	117.1	95.5	127.6	125.6	106.3	108.4	110.5
December	117.2	96.2	127.6	125.7	106.9	108.9	110.8
1997							
January	117.3	96.9	127.6	126.6	106.9	109.3	111.5
February	117.8	98.9	126.3	128.1	107.0	110.2	112.9
March	118.2	99.6	127.7	128.1	107.0	110.6	113.4
April	118.1	99.9	124.4	128.2	107.1	110.5	113.2
May	119.0	99.9	125.4	128.5	107.1	110.6	113.4
ADELAIDE							
1993-94	107.8	95.7	113.7	117.8	104.5	106.0	106.6
1994-95	111.7	85.5	121.0	117.3	109.0	104.7	102.5
1995-96	112.8	93.9	131.4	120.4	109.7	109.3	108.9
1996							
March	113.2	92.8	131.4	120.8	109.7	109.1	108.6
April	113.0	93.0	130.1	123.6	109.7	109.8	109.7
May	112.9	93.2	130.1	123.6	109.7	109.9	109.8
June	112.8	93.0	130.1	123.8	109.7	109.8	109.7
July	112.9	89.8	129.9	125.5	109.7	109.3	108.9
August	113.2	85.0	130.2	125.5	109.7	107.8	106.7
September	113.8	88.0	130.2	125.5	109.7	108.8	108.1
October	114.5	87.4	130.0	125.5	110.0	108.7	107.8
November	115.4	77.4	126.8	125.8	110.0	105.4	102.9
December	115.6	77.2	126.5	125.8	110.5	105.4	102.8
1997							
January	115.6	82.4	126.5	125.8	110.5	107.1	105.2
February	115.8	83.2	124.6	125.9	110.6	107.2	105.4
March	115.6	83.1	129.5	125.4	110.6	107.4	105.7
April	116.1	84.9	124.1	125.8	110.6	107.7	106.1
May	116.1	84.7	123.8	125.8	110.6	107.6	105.9

(a) Base of each index: 1989-90 = 100.0

Period	MECHANICAL SERVICES COMPONENTS.....				PLUMBING MATERIALS.....			
	Air conditioning	Fire protection	Elevators, escalators and travelators	All mechanical services	Hydraulic plumbing	Drainage	Roof plumbing	All plumbing materials
BRISBANE								
1993-94	108.6	112.3	94.1	106.8	115.3	120.3	106.9	112.9
1994-95	110.2	115.0	95.3	108.5	119.4	124.8	102.7	116.5
1995-96	113.6	119.0	99.5	112.3	126.5	125.7	101.5	122.7
1996								
March	114.2	119.6	100.3	113.0	123.8	123.0	103.7	120.2
April	114.3	119.6	100.3	113.0	123.7	121.3	103.7	120.0
May	114.6	119.6	100.3	113.2	125.4	126.1	103.7	121.9
June	114.6	119.6	100.6	113.3	125.7	125.3	103.7	122.0
July	115.3	119.6	100.6	113.6	124.9	125.3	103.7	121.4
August	115.3	120.3	101.3	114.0	125.3	123.8	104.0	121.6
September	116.0	120.3	100.4	114.1	125.9	126.9	104.0	122.4
October	116.0	120.3	100.4	114.1	125.1	127.0	104.0	121.7
November	115.7	120.3	99.1	113.5	125.5	127.0	104.0	122.0
December	116.0	121.0	99.1	113.8	126.3	125.7	104.0	122.6
1997								
January	116.0	121.0	99.1	113.8	126.3	127.0	104.0	122.7
February	116.3	121.0	99.4	114.0	127.4	126.7	107.9	123.8
March	116.5	121.0	98.2	113.8	127.6	126.9	107.9	123.9
April	116.7	121.0	98.2	113.8	127.9	130.2	107.9	124.5
May	116.8	121.0	98.2	113.9	128.2	127.7	107.9	124.6
ADELAIDE								
1993-94	115.2	115.0	88.5	110.5	104.6	106.9	106.4	105.0
1994-95	117.0	119.5	87.1	111.7	109.7	117.7	109.1	110.4
1995-96	118.7	126.3	90.8	115.0	115.8	113.8	111.8	115.7
1996								
March	118.6	126.9	92.3	115.5	115.5	109.0	114.1	115.2
April	118.8	126.9	92.3	115.6	115.7	109.1	114.1	115.3
May	119.2	126.9	92.3	115.8	116.4	109.5	114.1	116.0
June	119.5	127.2	92.7	116.2	117.1	110.5	114.1	116.7
July	119.1	127.2	92.7	115.9	115.9	108.8	114.1	115.5
August	119.1	127.2	92.9	116.0	115.9	107.8	114.1	115.5
September	119.2	127.2	91.3	115.5	116.1	106.3	114.1	115.5
October	118.1	127.2	91.3	114.9	115.6	106.3	114.1	115.1
November	117.9	127.2	89.8	114.3	115.3	106.4	114.1	114.8
December	117.9	127.2	89.8	114.4	115.6	107.8	114.1	115.1
1997								
January	118.4	127.2	89.8	114.6	115.8	108.1	114.1	115.3
February	118.6	127.2	89.8	114.7	116.4	106.8	115.3	115.9
March	117.5	127.2	88.7	113.8	116.7	110.8	115.3	116.4
April	117.6	127.2	88.7	113.8	116.8	112.9	116.1	116.7
May	117.6	127.5	88.7	113.8	116.8	115.0	116.1	116.9

(a) Base of each index: 1989-90 = 100.0

ELECTRICAL MATERIALS.....

Period	All groups excluding electrical materials and mechanical services	PERTH					All electrical materials	All electrical materials excluding lamps and light fittings
		Conductors	Conduit and accessories	Switchboards and switchgear	Lamps and light fittings	All electrical materials		
PERTH								
1993-94	108.3	84.7	120.6	113.7	107.5	101.9	99.7	
1994-95	111.3	97.6	130.7	115.0	108.2	107.3	107.5	
1995-96	113.4	108.2	142.2	115.9	112.0	113.0	114.1	
1996								
March	113.4	107.4	143.3	116.1	111.8	112.8	114.0	
April	113.3	107.8	145.9	116.8	112.3	113.5	114.7	
May	113.2	107.8	146.5	116.8	113.7	114.0	114.8	
June	113.1	107.8	146.5	116.8	113.2	113.9	114.8	
July	114.0	103.3	147.3	116.9	113.2	112.6	112.9	
August	114.3	103.2	147.9	116.9	106.3	110.3	112.9	
September	114.7	101.6	147.9	117.0	107.3	110.2	112.2	
October	114.7	101.6	147.9	117.1	107.3	110.2	112.3	
November	114.9	99.1	147.9	117.1	107.3	109.4	111.1	
December	115.2	99.1	147.9	117.1	107.7	109.6	111.1	
1997								
January	115.2	101.5	147.9	117.1	107.7	110.3	112.2	
February	115.9	101.9	145.6	117.3	107.7	110.3	112.2	
March	115.9	103.6	150.5	117.3	108.7	111.5	113.6	
April	116.2	103.8	144.4	117.4	108.7	111.1	113.0	
May	116.1	103.8	144.8	117.6	107.6	110.9	113.1	
HOBART								
1993-94	111.0	87.7	114.7	122.8	99.7	104.7	107.0	
1994-95	112.7	107.0	126.3	123.8	96.3	110.8	118.0	
1995-96	115.5	126.9	136.6	125.3	97.1	118.6	129.2	
1996								
March	115.3	126.8	140.8	124.2	96.9	118.6	129.3	
April	115.2	126.6	131.4	126.0	96.9	118.3	128.8	
May	115.3	126.6	131.6	129.2	98.1	119.6	130.1	
June	115.3	126.3	131.6	129.1	98.2	119.5	130.0	
July	116.1	126.3	132.3	129.1	98.2	119.5	130.0	
August	116.5	122.5	134.1	128.3	84.4	113.7	128.1	
September	116.3	122.5	135.6	128.8	84.4	113.9	128.5	
October	116.2	122.4	134.8	128.7	97.9	118.3	128.3	
November	116.6	122.4	134.8	128.7	97.9	118.3	128.3	
December	116.7	122.4	134.8	128.7	97.9	118.3	128.3	
1997								
January	116.8	122.8	134.8	128.7	97.8	118.4	128.5	
February	117.1	122.8	134.8	128.7	97.8	118.4	128.5	
March	117.1	119.7	135.9	128.6	98.0	117.6	127.1	
April	117.3	119.7	138.4	127.6	98.0	117.4	127.0	
May	117.2	119.7	139.7	127.9	97.8	117.6	127.3	

(a) Base of each index: 1989-90 = 100.0

Period	MECHANICAL SERVICES COMPONENTS.....				PLUMBING MATERIALS.....			
	Air conditioning	Fire protection	Elevators, escalators and travelators	All mechanical services	Hydraulic plumbing	Drainage	Roof plumbing	All plumbing materials
PERTH								
1993-94	106.6	105.4	94.4	104.2	98.6	121.7	107.4	105.1
1994-95	109.6	109.8	95.2	106.8	107.8	130.4	109.8	114.4
1995-96	114.0	120.0	100.1	112.3	113.9	126.0	116.6	120.1
1996								
March	114.9	119.6	102.1	113.4	113.8	121.4	119.7	119.7
April	114.9	126.4	102.1	114.4	113.4	115.4	119.7	118.9
May	115.1	126.4	102.1	114.5	114.7	117.8	119.7	120.3
June	115.1	126.4	102.3	114.6	114.8	117.3	119.7	120.4
July	114.5	126.4	102.3	114.3	111.5	117.7	119.7	117.3
August	114.4	124.4	102.9	114.1	111.5	120.3	119.7	117.4
September	114.4	124.4	101.0	113.5	111.9	119.8	119.7	117.9
October	114.9	124.4	101.0	113.8	111.1	119.2	119.7	117.0
November	113.5	124.4	99.7	112.6	111.6	118.6	119.7	117.4
December	113.7	124.4	99.7	112.7	113.2	119.5	119.7	119.0
1997								
January	113.7	128.4	99.7	113.3	113.3	118.5	119.7	119.1
February	113.9	128.4	99.7	113.4	114.4	118.5	120.4	120.1
March	113.9	128.4	98.1	112.9	114.9	117.0	122.2	120.5
April	114.0	128.4	98.1	113.0	115.2	121.0	122.2	121.1
May	113.7	128.4	98.1	112.8	115.3	121.0	126.8	121.3
HOBART								
1993-94	112.1	115.4	97.4	109.6	113.3	105.2	109.8	110.1
1994-95	115.5	120.5	98.8	112.6	129.5	108.5	114.2	124.6
1995-96	117.1	122.2	102.9	115.1	133.0	107.5	119.2	127.7
1996								
March	117.6	122.1	104.1	115.7	132.8	108.5	120.8	127.6
April	118.2	122.5	104.1	116.1	132.0	104.1	120.7	126.6
May	118.2	122.5	104.1	116.1	132.5	104.1	121.6	127.1
June	118.5	122.6	105.1	116.5	132.7	104.1	122.6	127.3
July	118.1	122.7	105.1	116.3	131.9	108.3	127.0	127.0
August	119.2	122.7	106.6	117.4	130.7	107.7	127.0	126.0
September	119.6	122.7	106.6	117.6	130.8	107.7	127.0	126.0
October	118.9	122.7	106.6	117.3	124.7	103.6	126.0	120.4
November	119.0	122.7	104.0	116.5	125.2	103.6	124.0	120.7
December	119.0	122.7	104.0	116.5	125.7	103.6	124.0	121.2
1997								
January	119.0	123.4	104.0	116.6	125.3	103.6	124.0	120.8
February	119.1	123.3	104.0	116.6	125.5	103.6	124.0	121.0
March	120.7	123.3	102.6	117.1	126.7	104.1	129.2	122.3
April	120.8	123.3	102.6	117.1	126.9	104.1	129.2	122.5
May	120.8	123.3	102.6	117.1	127.0	104.1	129.2	122.5

(a) Base of each index: 1989-90 = 100.0

EXPLANATORY NOTES

INTRODUCTION

1 This publication presents index numbers measuring changes in prices of selected materials used in the construction of buildings other than houses — the *Price Index of Materials Used in Building Other than House Building*. It is calculated on the reference base 1989–90 = 100.0 for the six State capital cities.

2 Index numbers for the current month and the previous three months are preliminary and subject to revision.

SCOPE

3 The index includes 63 items which are combined into 10 industry of origin groups and an 'All groups' total. Table 1 presents 'All groups' index numbers for the weighted average of the six State capital cities, for each of the cities separately. Although many of the selected materials are also used in house building, in building repair, maintenance and alteration work and in engineering construction work (e.g. projects such as roads, dams, bridges and the like), the weighting pattern of the index is not applicable to these other activities of the construction industry. In addition, since the weights are based on an average materials usage over a range of types of building within the defined area (building other than house building), the index is not necessarily applicable to any specific building or type of building.

CLASSIFICATION

4 For the weighted average of the six State capital cities the selected materials have been combined into broad groups on an industry of origin basis. Table 4 presents index numbers for groups defined in terms of the Groups (3 digit level) of the 1993 *Australian and New Zealand Standard Industrial Classification (ANZSIC)*; the percentage contributions for individual materials and groups are shown in table A1 of the Appendix of the October 1993 issue of this publication. The 'industry of origin' is not necessarily identical to the industry which supplies the materials to builders. The 'industry of origin' is the industry in which the material is *primarily produced*, determined in accordance with the classification rules of the ANZSIC. For instance, many of the materials are classified to the appropriate producing industries, rather than the wholesale trading industries. Some materials used in constructing buildings in Australia are imported. Imported materials are allocated to the similar industry of origin as Australian produced materials.

ITEMS AND WEIGHTS

5 The index is a fixed weights index. The items were selected and allocated weights in accordance with the estimated average values of materials used in the construction of buildings other than houses completed in each of the seven capital cities in the five years ended June 1992. This same weighting pattern is used for each of the seven capital cities. The weighting pattern for the 'All groups' index is set out in Appendix A of the October 1993 issue of this publication.

PRICE MEASUREMENT

6 Prices are collected at the mid point of the month to which the index refers, or the nearest trading day. They relate to specific standards of each material and are obtained from representative suppliers of materials used in building. In general, the point of pricing is 'delivered on site' but in some cases it has been necessary to use the nearest realistic price available e.g. 'delivered to electrical contractor's store'. Local prices are used in the indexes for each capital city.

EXPLANATORY NOTES

.....

PRICE MEASUREMENT (continued)

7 As far as possible, actual transactions prices are used in this index — that is, prices actually paid by building contractors or subcontractors to suppliers for materials delivered on building sites. The actual price paid for anything can be described in various ways. Instead of being described as a single price (as usually happens in retail shops) a price for a building material may be described in terms of the components which make up the price — for instance 'list price plus sales tax', 'suppliers price plus freight', 'basic price less (particular types of) discount' and so on. It is these *net* prices that buyers pay to sellers for materials that the ABS aims to use in compiling this index.

8 The ABS asks respondent businesses to report details of the discounts they offer so that actual transactions prices can be calculated. However, as building material suppliers offer many different types of discounts to buyers (e.g. trade discounts, settlement discounts, quantity discounts, competitive discounts), the identification of the discounts and the way in which they are applied by sellers pose considerable problems for the ABS. To the extent that discounts are identified and measured, their effects are taken into account in calculating the index. Sometimes new discounts, or changes in the way discounts are applied by sellers, are identified only after index numbers for a particular period have been published. In such cases, or in any other case where it is discovered that incorrect prices have been used in compiling the indexes, revisions to index numbers may occur in subsequent issues of this publication.

9 To minimise the incidence of revisions, the ABS has stringent procedures to verify that prices reported in its mail collections are transactions prices net of discounts.

10 Sales taxes levied on building materials are included in the prices used to compile the index. Materials used in the construction of Commonwealth, State and Local Government owned buildings are exempt from sales tax; materials used in most non-government 'health' and 'education' buildings and buildings for non-profit organisations such as religious and charitable institutions are also exempt. At any particular time, when there is a change in the rate of sales tax on building materials, the movement in the index takes into account the proportion of materials sold subject to sales tax and the proportion of materials exempt from sales tax.

11 On request, the ABS can provide further information on the treatment of sales tax in the index including details of factors to either include the full effects of sales tax changes or exclude entirely the effects of sales tax changes.

INDEX NUMBERS

12 Index numbers for financial years are averages of monthly index numbers.

SELECTED MATERIALS

13 Table 5 contains index numbers for selected materials used in constructing buildings other than houses for the weighted average of the six State capital cities. In general these indexes relate to either single items or combinations of items as shown in the weighting pattern published in table A1 of the Appendix to the October 1993 issue of this publication. Tables 6 to 9 contain index numbers for selected major materials for each State capital city.

SPECIAL COMBINATIONS OF MATERIALS

14 Tables 10 to 12 contain index numbers for the following special combinations of materials, for the weighted average of the six State capital cities and each State capital city:

- All groups excluding electrical materials and mechanical service components
- Electrical materials
- Mechanical services components
- Plumbing materials

EXPLANATORY NOTES

REVISIONS

15 Index numbers for the current month and the previous three months are preliminary and subject to revision. From time to time index numbers for earlier months may also be revised. This will occur whenever the ABS obtains more complete information or discovers that incorrect prices have been used.

ANALYSIS OF INDEX CHANGES

16 Care should be exercised when interpreting month-to-month movements in the indexes as short-term movements do not necessarily indicate changes in trend.

17 The separate city indexes measure price movements over time in each capital city individually. They do not measure differences in price levels between cities.

18 Movements in indexes from one period to another can be expressed either as changes in 'index points' or as percentage changes. The following example illustrates the method of calculating index points changes and percentage changes between any two periods:

Weighted average of six State capital cities index numbers —			
May 1997		113.8	(see Table 1)
less May 1996		112.8	(see Table 1)
Change in index points		1.0	
Percentage change	$\frac{1.0}{112.8} \times 100 =$	0.9	

19 Table 3 provides an analysis of the contribution which selected major building materials make to the All groups index for the weighted average of the six State capital cities. For example, Ready mixed concrete contributed 10.19 index points to the All groups index number of 113.8 for May 1997 and 0.03 index points to the net change of 0.0 index points.

FURTHER INFORMATION

20 Further information on the index is presented in the publication *Producer and Foreign Trade Price Indexes: Concepts, Sources and Methods* (6419.0).

RELATED PUBLICATIONS

21 Users may also wish to refer to the following price index publications which are available from ABS Bookshops:

Price Index of Materials Used in House Building, Six State Capital Cities and Canberra (6408.0)

Price Indexes of Materials Used in Manufacturing Industries, Australia (6411.0)

Price Indexes of Articles Produced by Manufacturing Industry, Australia (6412.0)

Price Indexes of Copper Materials, Australia (6410.0)

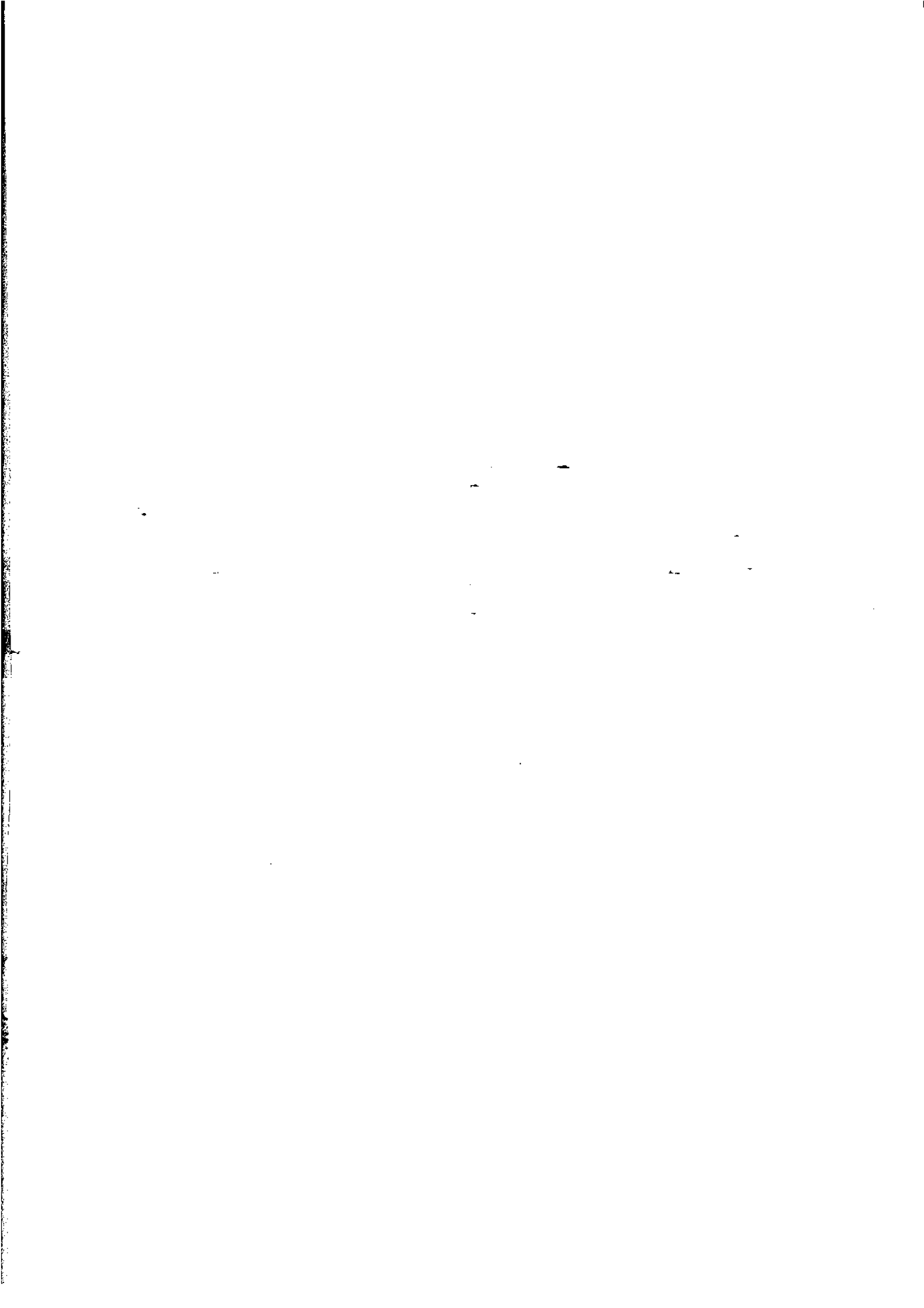
22 Other ABS publications that may be of interest include:

Award Rates of Pay Indexes, Australia (6312.0)

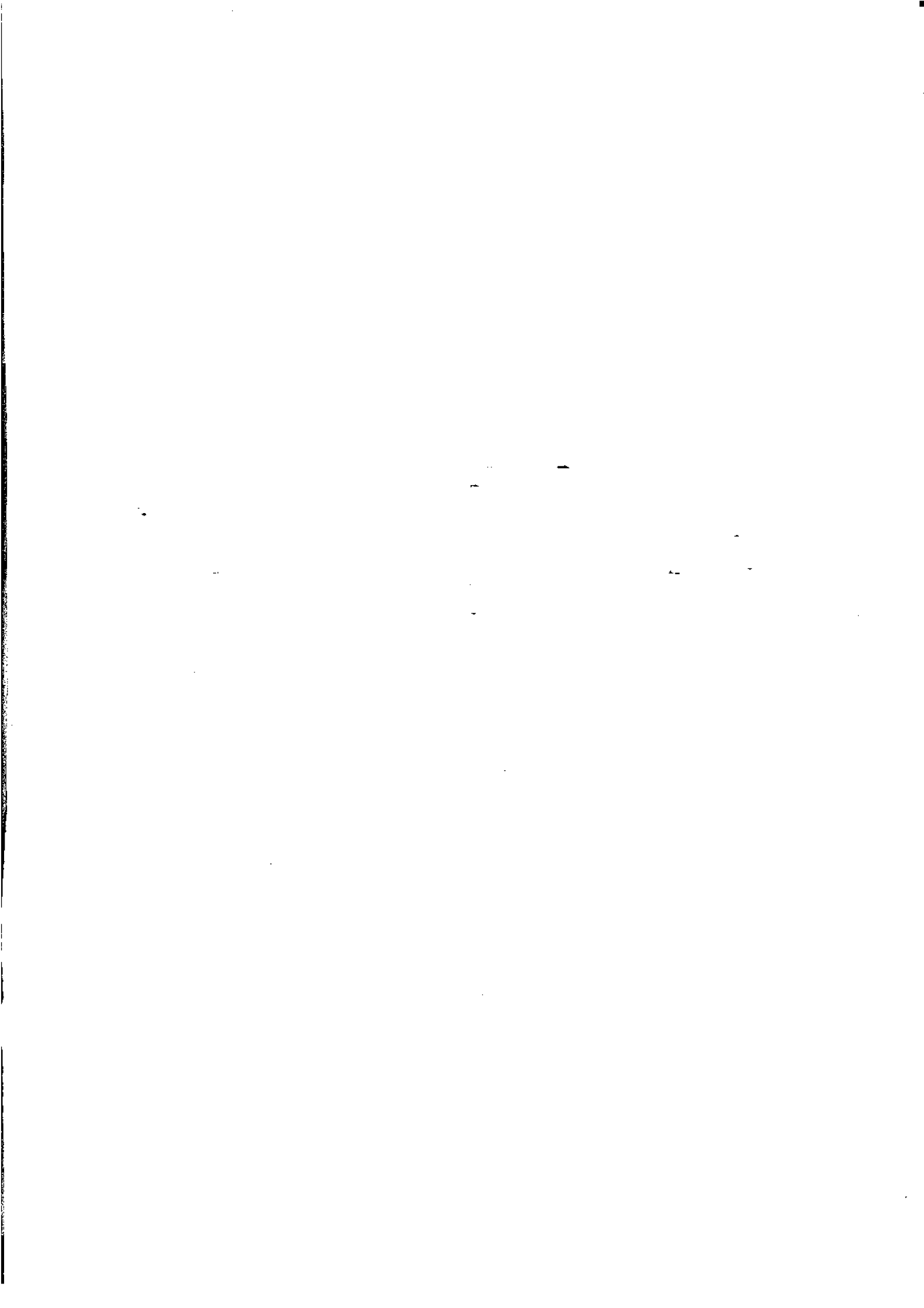
Average Weekly Earnings, States and Australia (6302.0)

EXPLANATORY NOTES

- RELATED PUBLICATIONS (continued) **23** Current publications produced by the ABS are listed in the *Catalogue of Publications and Products, Australia* (1101.0). The ABS also issues, on Tuesdays and Fridays, a *Release Advice* (1105.0) which lists publications to be released in the next few days. The Catalogue and Release Advice are available from any ABS office.
- UNPUBLISHED STATISTICS **24** As well as the statistics included in this and related publications, the ABS may have other relevant unpublished data available. Inquiries should be made to Robert Adams on 06 252 6198 or to any ABS office.
- SYMBOLS AND OTHER USAGES ANZSIC Australian and New Zealand Standard Industrial Classification
r figure or series revised since previous issue







FOR MORE INFORMATION...

The ABS publishes a wide range of information on Australia's economic and social conditions. A catalogue of publications and products is available from any of our offices (see below).

INFORMATION CONSULTANCY SERVICES

Information tailored to special needs of clients can be obtained from the Information Consultancy Service available at ABS Offices (see below).

ABS PRODUCTS

A large number of ABS products is available from the ABS Bookshops (see below). The ABS also provides a subscription service – you can telephone the ABS Subscription Service Australia wide toll free on 1800 0206 08.

ELECTRONIC SERVICES

A large range of data is available via on-line services, diskette, magnetic tape, tape cartridge and CD ROM. For more details about our electronic data services, contact any ABS office (see below) or e-mail us at:

- client.services@abs.gov.au

GENERAL SALES AND INQUIRIES

- Sydney 02 9268 4611
 - Melbourne 03 9615 7755
 - Brisbane 07 3222 6351
 - Perth 08 9360 5140
 - Adelaide 08 8237 7100
 - Hobart 03 6222 5800
 - Darwin 08 8943 2111
 - Canberra 06 252 6627
- Information Services, ABS
PO Box 10, Belconnen ACT 2616



2640700005974

ISSN 1325-2151

RRP \$17.00